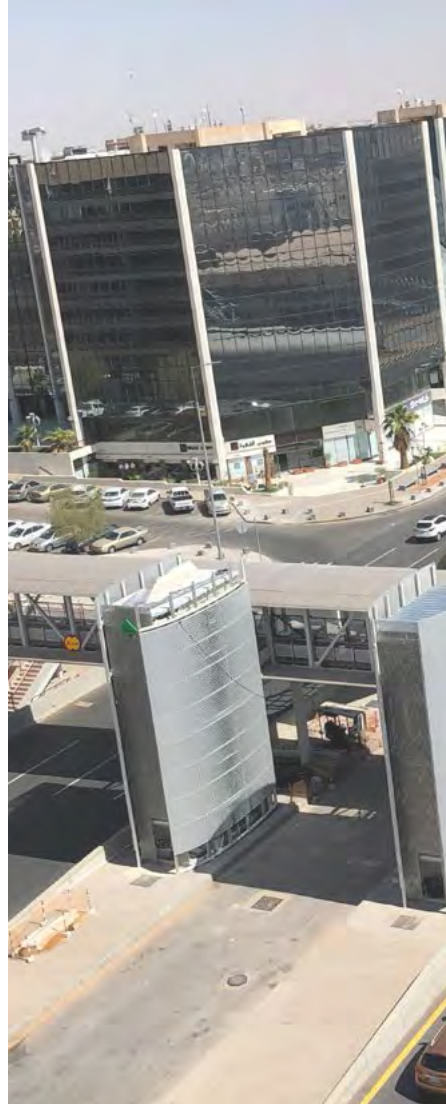




RIYADH BUS STOP



IRIS - FAIRMONT RAMLA



OVERVIEW

DALPCO



Overview | DALPCO

Established
in 1979

DALPCO, a state-of-the-art aluminum fabrication facility, was established in 1979 in Riyadh.

In 2019, two prominent Aluminum Contractors, Madarioun and Alusteel, operating under a JOINT VENTURE, owned the facility (DALPCO) as to cater for their production needs, which included two notable projects: the Riyadh Bus Stop and two Airport Metro Stations including their connecting bridges, as well as few other smaller projects.

The fully equipped and sophisticated fabrication facility coupled with the combined wealth of experience and capabilities of MADARIOUN and ALUSTEEL allowed DALPCO to serve better the Saudi market and to support the group in other areas of its presence such as, the Gulf, Lebanon, Cyprus and parts of Africa.



A Corporation between ALUSTEEL & MADARIOUN.

Since 1990

Armed with imagination, Alusteel is proving itself today as a leader in the domain of building envelopes.

Alusteel was founded in 1990 and grew from a small aluminum company in the village of Baabdat in Lebanon with a handful of workers, into a dynamic facade specialist company in the both the Middle East and Africa.

Alusteel was possible thru a visionary leadership and wise management in the face of challenges. Committed to delivering high quality products and services, Alusteel provides innovative engineering solutions exceeding client expectations and demands.

At Alusteel, we have more than 2,000 trained-personnel in our three main factories established in Lebanon, the Kingdom of Saudi Arabia (KSA) and Nigeria.

We also hold the latest machining technology that allows us to cover different market needs in countries such as Bahrain, Qatar, Zambia, Democratic Republic of Congo, and Cyprus.

Sourcing superior technologically from globally recognized suppliers and delivering premium services enable the company to execute iconic works. Alusteel collaborates with different international aluminum system providers such as SAPA building systems in Belgium, Hueck, Gutmann and Schuco in Germany, as well as Muskita and Rabel in Cyprus to ensure the delivery of high standard finished products in terms of quality and sustainability.

At Alusteel, we do not limit our engineering expertise to a certain area or country as we continuously strive to enter new markets and territories.



40 years
of experience

Overview | MADARIOUN

FOUNDED IN 1982, MADARIOUN, IS ONE OF THE PIONEERS IN THE FAÇADE INDUSTRY IN THE MIDDLE EAST.

The management of MADARIOUN, assisted by a selected team of old-timers, preserved the legacy of the group over a period of almost 40 years, through continuous recruitment and training of young talented engineers and technicians, as well as staying updated on the latest technological advancement in the building envelope industry also through continuous updating and upgrading of systems, procedures, and machinery.

The combination of the hands-on experience and acquired knowledge of old timers and the dynamism of the new generation of professionals, created the perfect fusion for excellence that MADARIOUN built its reputation on.

Irrespective of MADARIOUN's lengthy experience in executing sophisticated façades in many countries of the MENA region, the company's main experience still lies in the Saudi Arabian market, where it has executed many of the Kingdom's landmark projects. The latest were the Bus Stops of Riyadh, awarded by Saudico for an approximate value of SAR 180 M, and two Riyadh Airport Metro Stations awarded by FREYSSINET for a value of about SAR 60 M.

MADARIOUN management strongly believes that, machines alone don't make the difference, yet people do, which is why we are keen on preserving and maintaining the well-trained team that we have always had. Our business system is designed to keep our personnel satisfied and proud to be part of the group by giving them the opportunity to achieve world standard practices, processes, technologies, and customer collaborations as a way of life.

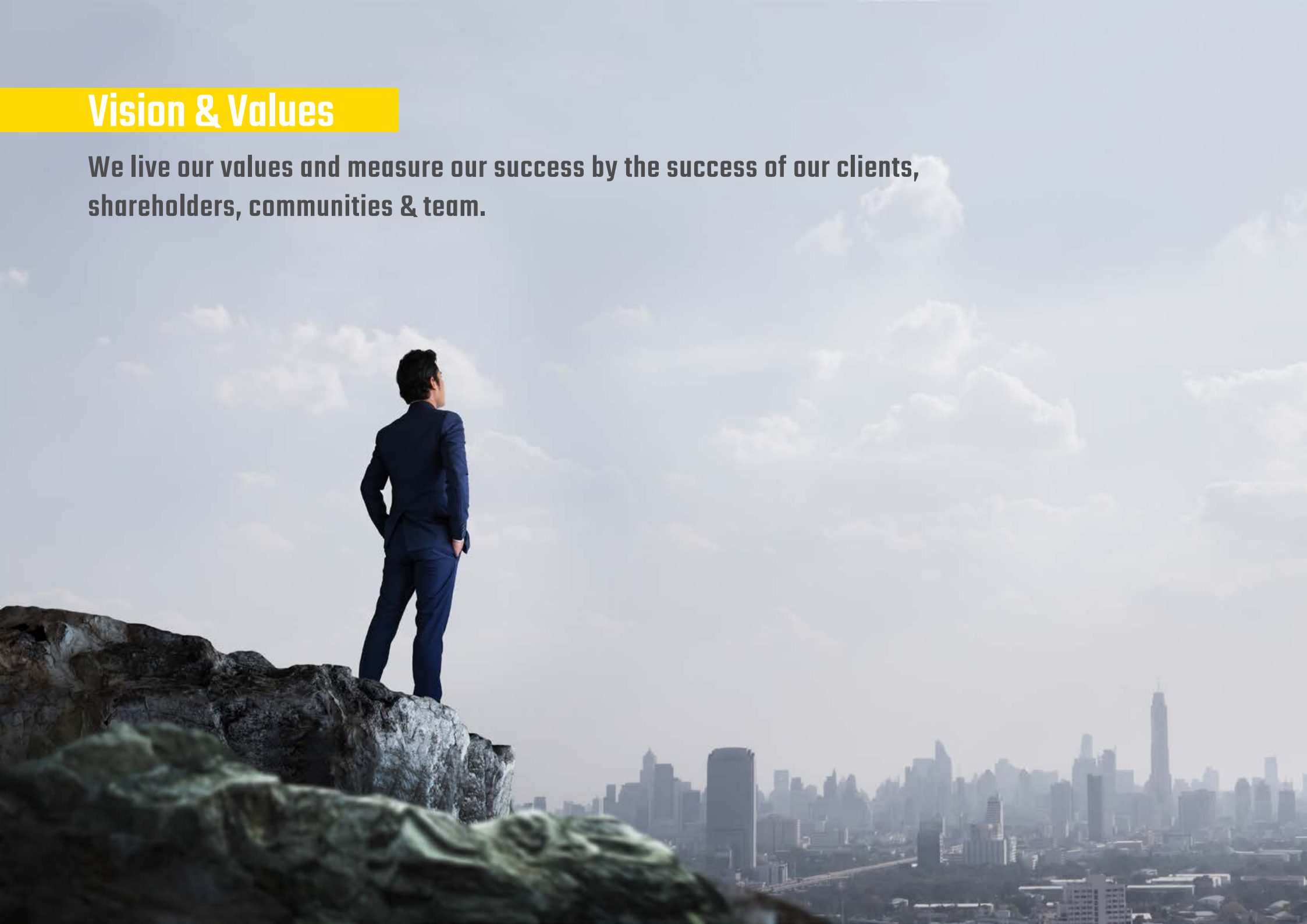
Financial strength gives us the freedom and flexibility to achieve our vision and live up to our values. It all started with an unwavering focus on the fundamentals, a conservative view on leveraging our resources, and a willingness to measure ourselves against the best.

MADARIOUN succeeds when its clients succeed. Everything we do and everything we are building onwards begins with that reality.



Vision & Values

We live our values and measure our success by the success of our clients, shareholders, communities & team.



Vision & Values | We live our values and measure our success by the success of our clients, shareholders, communities & team.

Vision Dalpco strives to be one of the **leading aluminum companies** in the Middle East.

Values Dalpco is a **value based company**.

Integrity Dalpco foundation is our integrity. We are **open, honest and trustworthy** in dealing with customers, suppliers, coworkers, shareholders and the communities where we have an impact.

Environment, Health & Safety We work safely in a manner that protects and promotes the **health and well-being of the individual and the environment**.

Client We support our clients success by creating **exceptional value** through innovative product and service solutions.

Excellent We relentlessly **pursue excellence in everything we do**, every day.

People We work in an **inclusive environment** that embraces change, new ideas, respect for the individual and equal opportunity to succeed.

Profitability We earn **sustainable financial results** that enable profitable growth and superior shareholder value.

Accountability We are **accountable individually and in teams** for our behaviors, actions and results.



[illegible]

Resources | Fabrication Facility

Location

2nd Industrial City st.69, bldg.3477, unit no.11, Riyadh 14332-7025

Premises Area

7000 sqm of Fabrication & Storage Facility.

Productivity

10,000 sqm per month of Standard Glazed Façade
4,000 sqm per month of Unitized Glazed Façade
3,500 sqm per month of Cladding

Equipments

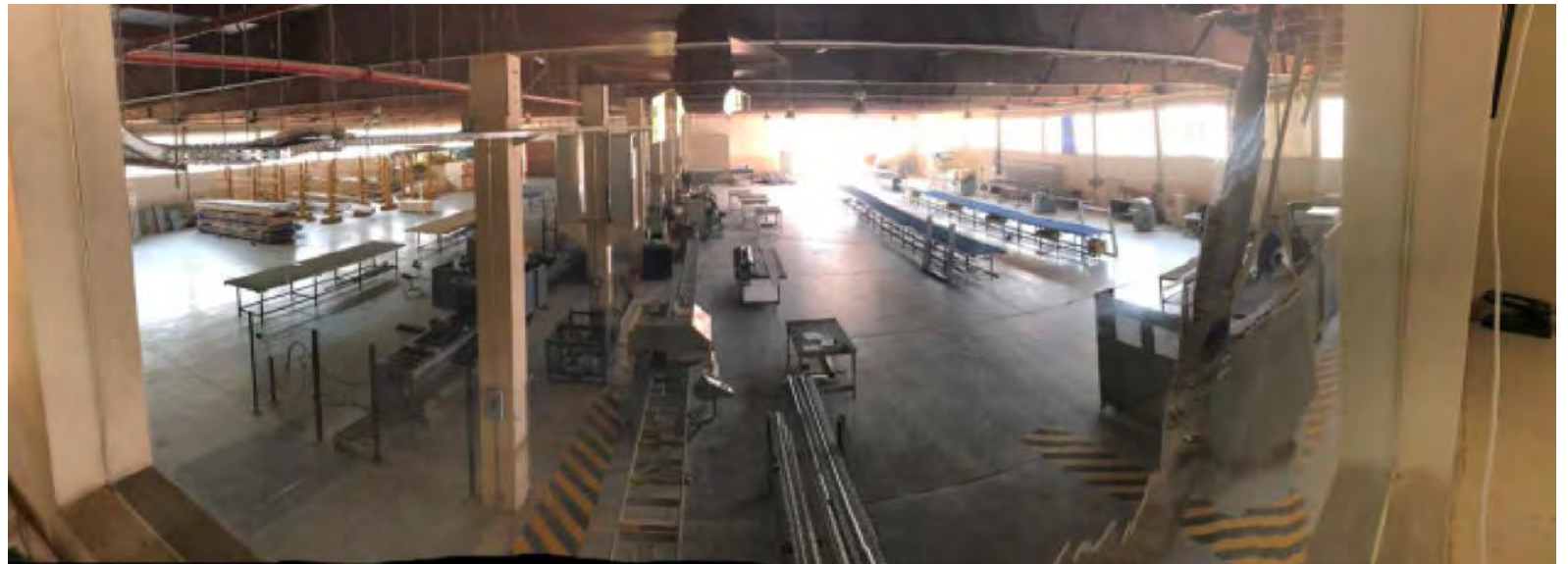
Aluminium fabrication and assembly equipments with automated CNC capabilities., 2 overhead cranes. Steel mobile A -frames, Assembly tables, Glass Suction Devices, Safety & Firefighting equipment's, controlled room. For sealant and sensitive items, please refer to equipments list.

Video

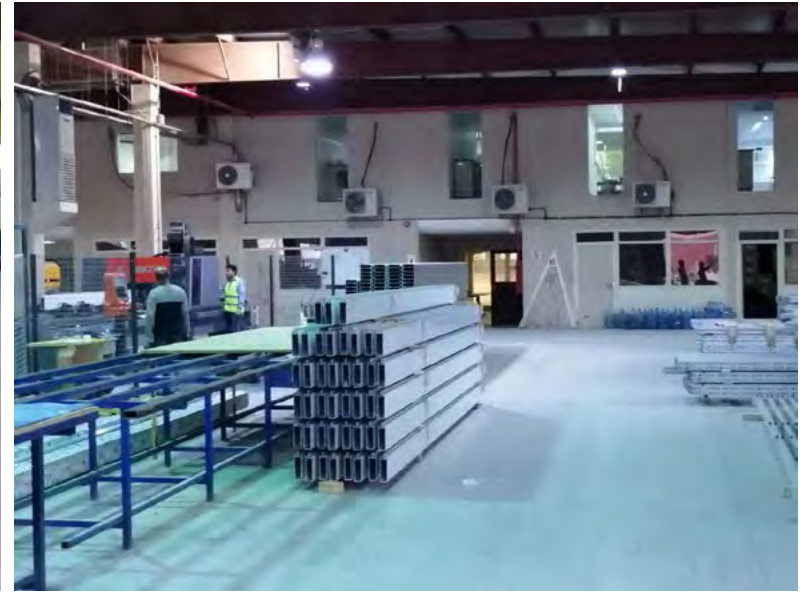
You may visit the following link to view the video about DALPCO fabrication facility. <https://youtu.be/LAhiGhLib-Y>



Resources | Fabrication Facility



Resources | Fabrication Facility



Resources | Fabrication Facility



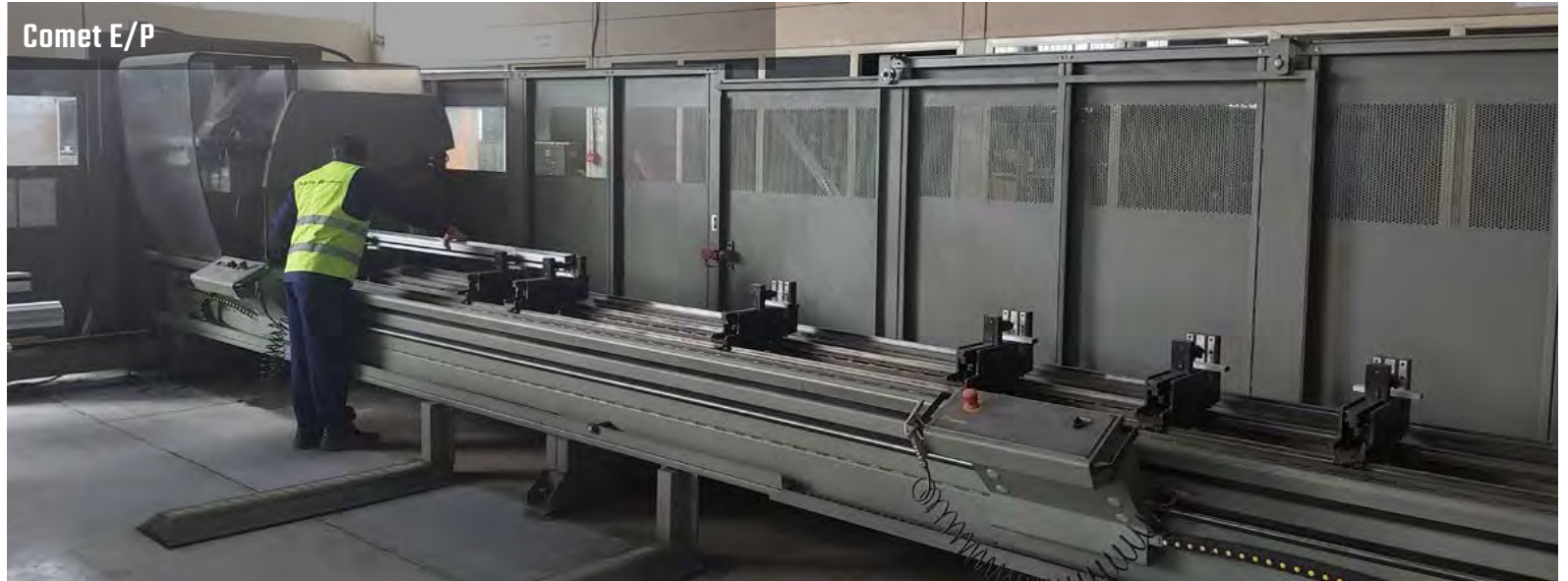
Resources | Fabrication Facility



Resources | Equipments

Emmegi 4-Axis CNC Machines

Comet E/P



Tekna - TKE 944



Resources | Equipments

Single Head Cutting-off Machine



Twin Head Cutting-off Machine



Automatic Single Head Cutting-off Machine

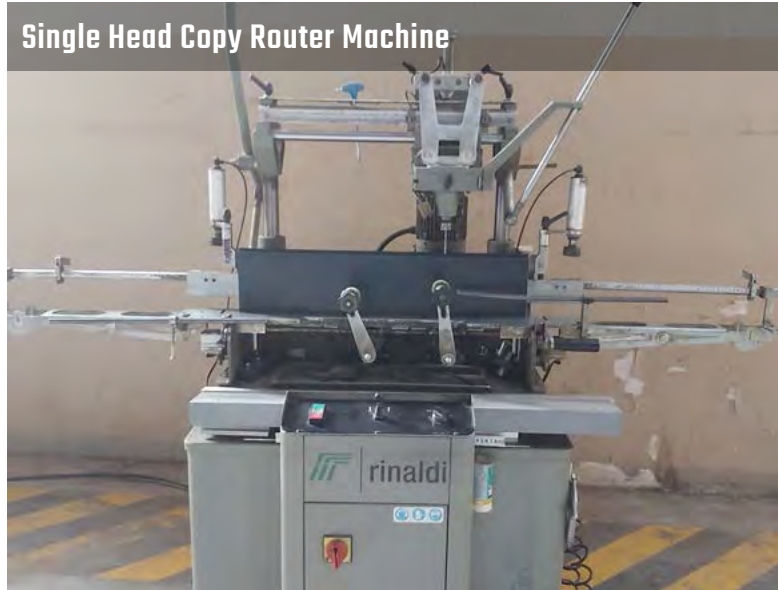


Crimping Machine



Resources | Equipments

Single Head Copy Router Machine



Crimping Machine for Corner Profiles



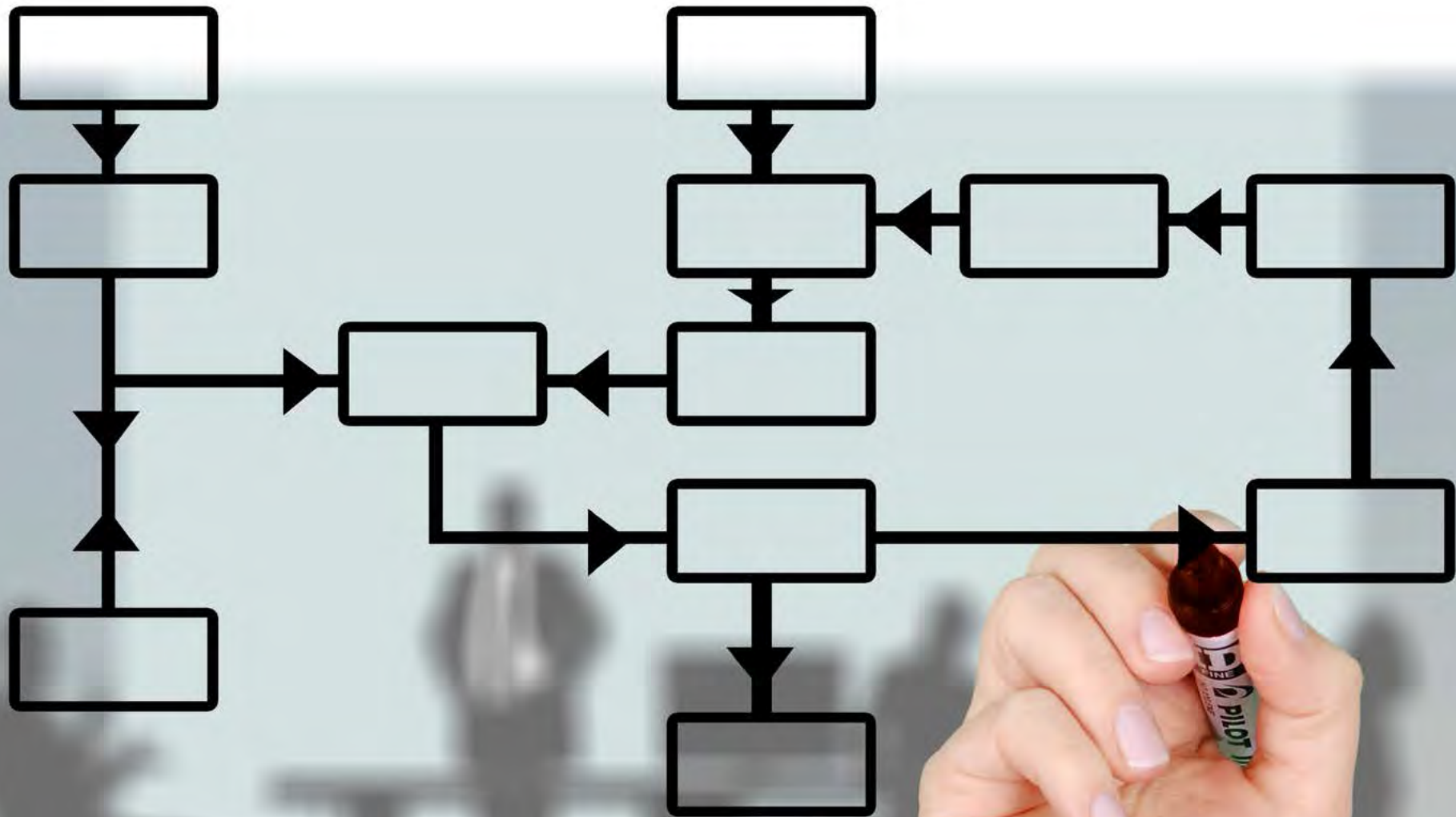
Horizontal End-Milling Machine



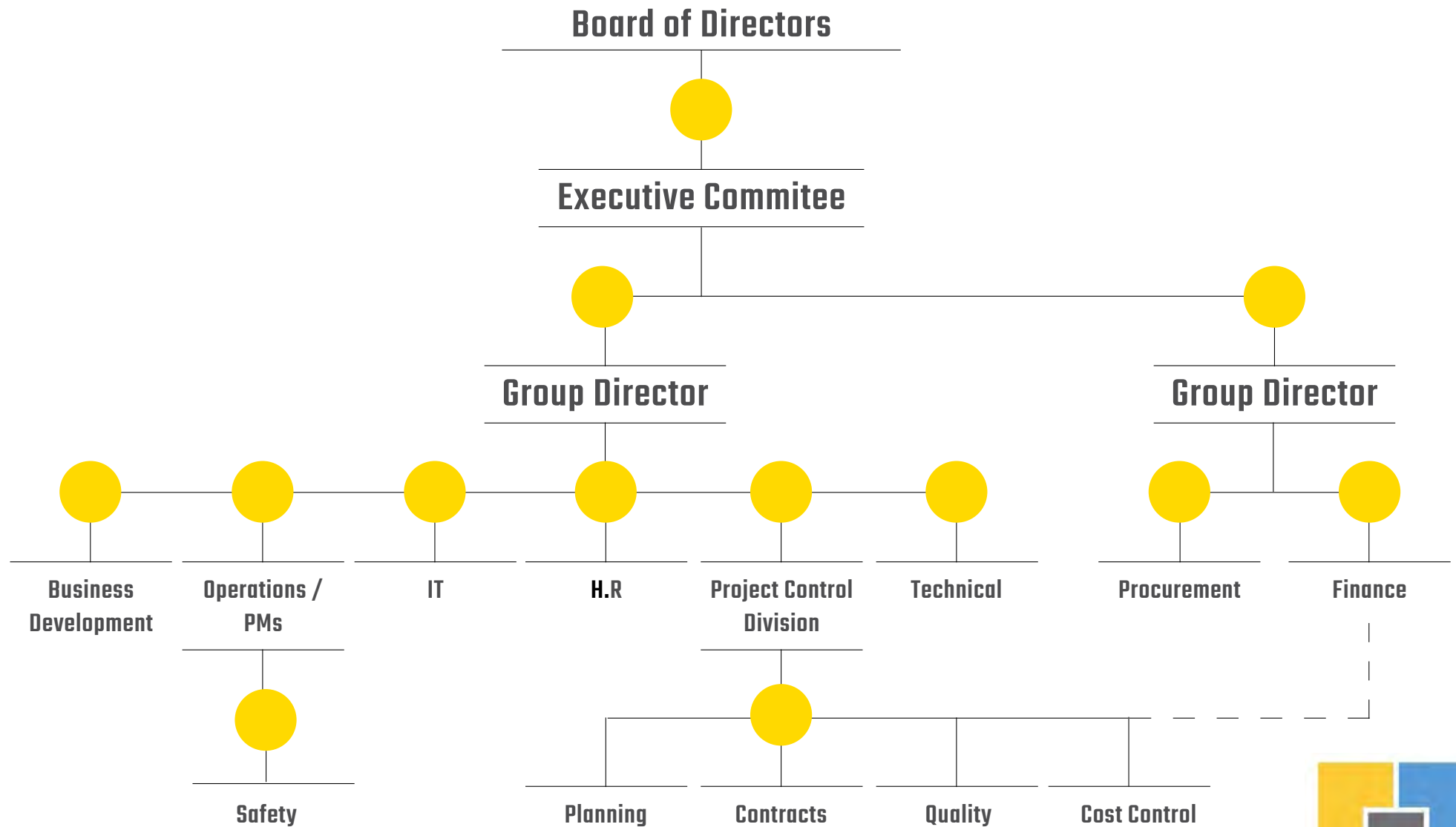
Composite Panel Saw Machine



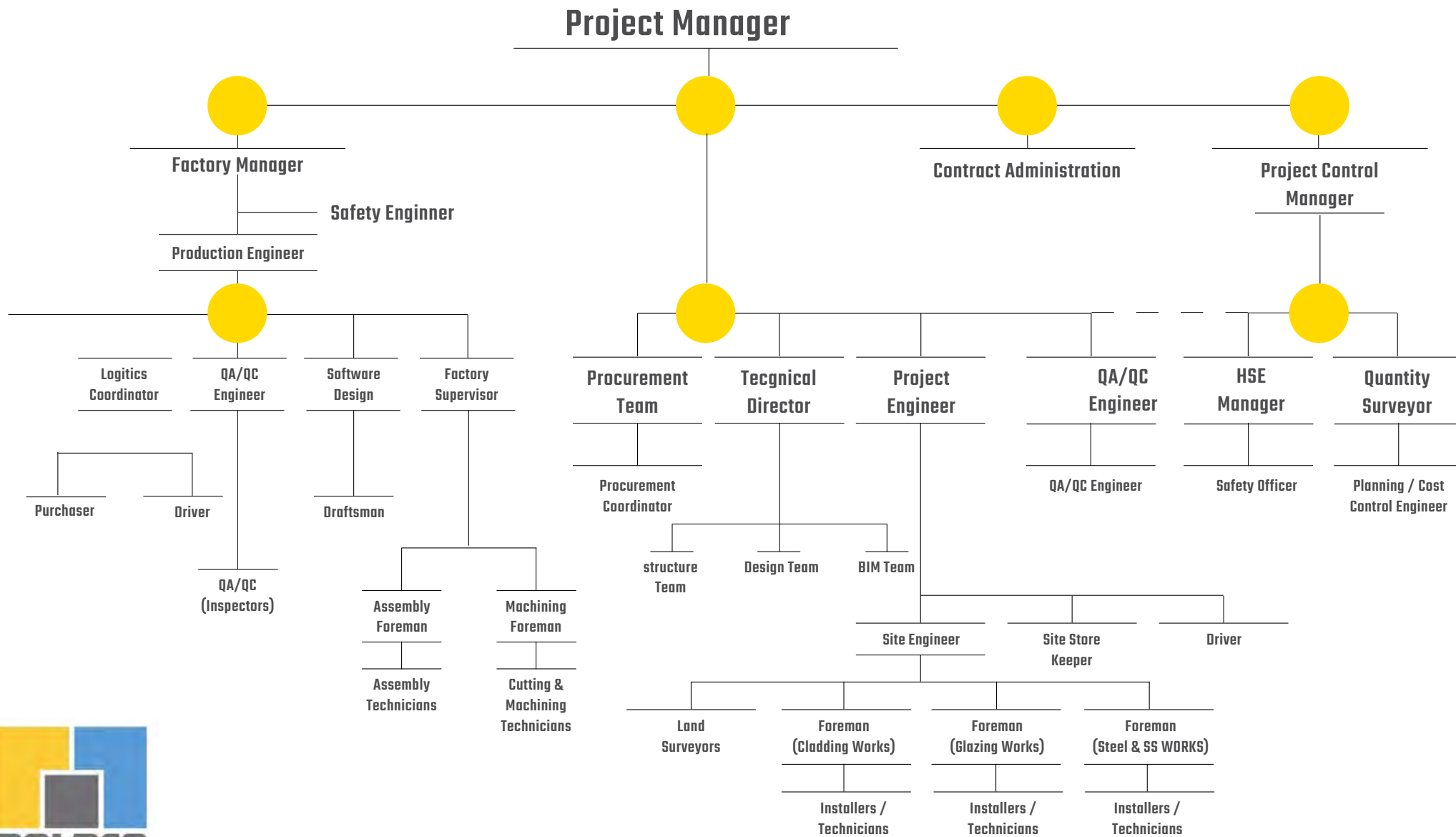
Organization Charts



Organization Charts | Corporate



Organization Charts | Projects



Major *Ongoing* Projects





Major Ongoing Projects					
S/N	Project name	Value in SAR	Client	Start Date	End Date
1	Turtle Bay Village - Z Type Buildings	15.3 M	Red Sea Global, RSG	Nov-24	End 2025
2	King Salman Park	20 M	Nesma & Partners	Sep-24	End 2025
3	Misk Foundation Center	42 M	Freyssinet SA	Jul-24	Jun-25
4	SIX FLAGS QIDDIYA THEME PARK	48.8 M	BBI-AGC JV	Jan-23	Apr-25
5	R08-HE4C27 - Shura East Hotel #4	10.5 M	Red Sea Global, RSG	Jul-23	Mar-25

Projects | MISK FOUNDATION CENTER | KSA



Location: Riyadh, KSA

Client: Mohammed Bin Salman Foundation

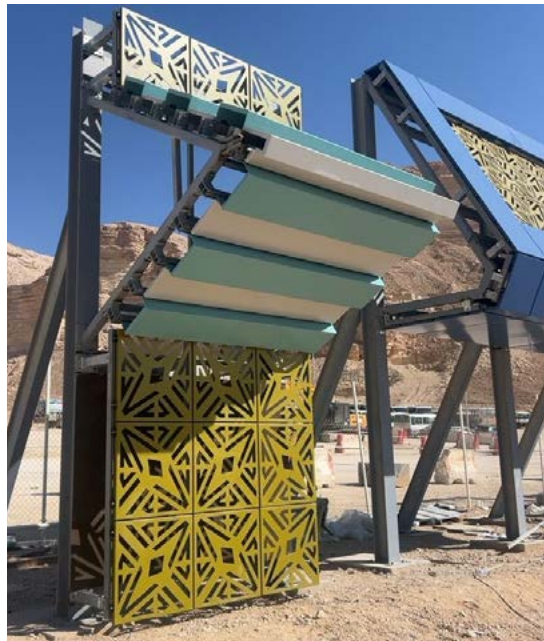
Architect : Conrad Gargett

Contractor: Freyssinet SA

Status: Under Execution | **Value:** 42 M SAR



Projects | SIX FLAGS QIDDIYA THEME PARK | KSA



Location: Riyadh, KSA

Client: Public Investment Fund (PIF) of Kingdom of Saudi Arabia
Operator: Qiddiya Investment Company

Major Consultants: AECOM, Atkins

Contractor: BBI-AGC JV
Bouygues Bâtiment Int'l & Almajani General Contractors

Status: Under Execution | **Value:** 48.8 M SAR



Projects | R08-HE4C27 - Shura East Hotel #4 | KSA



Location: Yanbu, KSA

Client: Public Investment Fund (PIF) of Kingdom of Saudi Arabia

Project Management: Red Sea Global, RSG

Architect: Oppenheim Architecture

Status: Under Execution | **Value:** 10.5 M SAR



Major Executed Projects





Recent Major Executed Projects

S/N	Project name	Value in SAR	Client	Start Date	End Date
1	R01H13-Desert Rock Hotel	16.5 M	Red Sea Global, RSG	Jan-23	Oct-24
2	King Abdallah Financial District-Parcel 1.08 & Parcel 4.12	115 M SAR	KAFDMC	Mar-22	Mar-24
5	Bus Rapid Transit Stations (& Bridges BRT)	161 M SAR	Saudi Constructioneers	Feb-19	Dec-21
6	METRO RIYADH	50 M SAR	Freyssinet SA	2019	Apr-22
7	FAIRMONT RAMLA-Restaurant Complex	7 M SAR	First Saudi Contracting Co.Consortium	2020	Apr-22
8	Experience Center	3.5 M	Saudi Constructioneers	Oct-21	Jul-22
9	Saudi British Bank, SABB New Head Office	4.0 M	El-Seif Engineering Contracting Co	Oct-21	Jul-22

Projects | Desert Rock Hotel - R01H13 | KSA



Location: Yanbu, KSA

Client: Public Investment Fund (PIF) of Kingdom of Saudi Arabia

Project Management: Red Sea Global, RSG

Architect: Oppenheim Architecture

Status: Under Execution | **Value:** 16.5 M SAR



Projects | KAFD-Façade Completion Work Parcel No.1.08 & No.4.12 | Riyadh, KSA

Client: Public Investment Fund (PIF) of Kingdom of Saudi Arabia

Project Management: KAFD DMC

Consultant: Parsons

Status: Executed 2024

Description |

The King Abdullah Financial District (KAFD) is a new development under construction near King Fahad Road in the Al Aqeeq area of Riyadh, Saudi Arabia being undertaken by King Abdullah Financial District Development and management Company (KAFD DMC).

The project consists of more than 83 buildings, including 61 towers, and combines residential solutions, work and entertainment over a space of more than 1.6 million square meters. It will provide more than 3 million square meters of space for various uses, 62,000 parking spaces and accommodation for 12,000 residents. In 2011, it was the largest project in the world seeking green building accreditation.



Projects | KAFD-Façade Completion Work Parcel No.1.08 | Riyadh, KSA



Description: | Parcel 1.08, is being performed for Wyndham Hotels, within the King Abdullah Financial District in Riyadh, Saudi Arabia.

The Wyndham Hotel in the prestigious KAFD will be the first Wyndham brand hotel in the Middle East. The project involves construction of a 83 meter 17-storey 5-star hotel in a prism shape which will include 4 basement levels and a 3 level podiums and will house the conference facilities, a multi-purpose hall and a number of restaurants that offer a variety of cuisines. The hotel of built up area 57, 310 sqm, will feature 214 rooms and will include a business center, an executive club, health club and spa centers.

DALPCO (the Contractor) entered into a Contract with the Employer (King Abdullah Financial District Management and Development Company) for Façade Completion Works in the Project (King Abdullah Financial District – Parcel 1.08).

The Scope includes the Design, Engineering, Fabrication, Supply, Delivery, Installation, testing, Liabe for defects, Handing over to the Employer and guarantee/warranty of the completion of Façade works consisting of:

- | | |
|--|--|
| • Curtain Walls / Doors / Windows - approx. 18,500 sqm | • Cladding panels - approx. 7,000 sqm. |
| • Decorative Metals - approx. 3,000 sqm. | • Canopy - approx. 600 sqm. |
| • Screen Glass, Louvers... - approx. 1000 sqm. | |



Projects | KAFD-Façade Completion Work Parcel No.1.08 | Riyadh, KSA



Projects | KAFD-Façade Completion Work Parcel No.4.12 | Riyadh, KSA

Description:

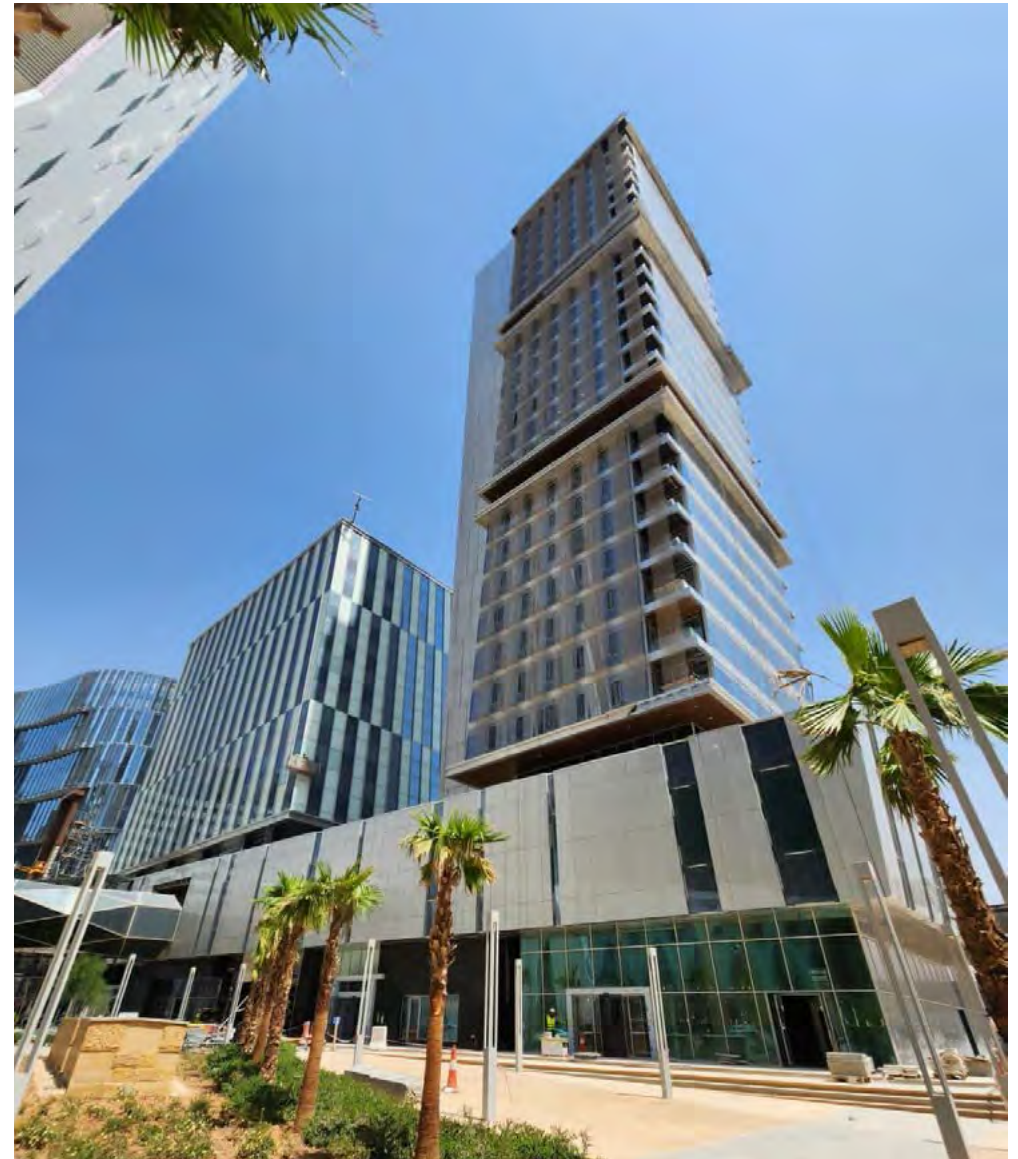
Parcel 4.12, forming part of KAFD, consists of two commercial and residential buildings. The first building will comprise 5 basement levels, a ground floor and (30) additional floors; while the second building will comprise a basement level, a ground floor and (10) additional floors.

The project plans shopping malls, and supermarkets all have one thing in common: to meet investors' and developers' requirements. The Project is designed to offer a unique family lifestyle.

DALPCO (the Contractor) entered into a Contract with the Employer (King Abdullah Financial District Management and Development Company) for Façade Completion Works in the Project (King Abdullah Financial District – Parcel 4.12).

The Scope includes the Design, Engineering, Fabrication, Supply, Delivery, Installation, testing, Liable for defects, Handing over to the Employer and guarantee/warranty of the completion of Façade works consisting of:

- Curtain Walls / Doors / Windows - approx. 6,000 sqm
- Cladding panels - approx. 7,000 sqm.
- Balustrade / Handrails - approx. 750 ml.
- Metal Items / SS / Decorative Items - approx. 3,000 sqm.
- Rolling Shutters, Louvers... - approx. 500 sqm.
- Stone Works - approx. 700 sqm.
- Firestop - 3,800 ml.
- Insulation - approx. 650 sqm.



Projects | Bus Rapid Transit (BRT) | KSA



Client: The Royal Commission of Riyadh City

Consultant: AL DAR | **Contractor:** Saudi Constructioneers

Status: Executed, 2021 **Contract Value:** SR 85 Million



Projects | BRIDGES – Bus Rapid Transit (BRT) | KSA



Client: The Royal Commission of Riyadh City

Consultant: AL DAR

Contractor: Saudi Constructioneers

Status: Executed, 2021 | **Contract Value:** SR 76 Million



Projects | METRO RIYADH | KSA



Client: The Royal Commission of Riyadh City

Consultant: RAMPED

Contractor: FREYSSINET

Status: Executed, 2021

Contract Value: SR 50 Million



Projects | IRIS – FAIRMONT RAMLA - Riyadh, KSA



Client: Ramla Real Estate Development | **Contractor:** First Saudi Contracting Co.Consortium | **Architect:** Badih & Kontar Architects
Status: Executed 2023

SCOPE OF WORK: Structural glazed aluminum curtain wall, decorative steel (Corten) decorative wood façade, retractable skylight, aluminum folding door, swing & hinged doors, vertical sliding windows.

SYSTEM USED: Schuco, Germany Steel Corten, China



Projects | Saudi British Bank, SABB New Head Office Tower- KSA



SABB  ساب

Client: SABB Bank | Architect : CallisonRTKL
Contractor: El-Seif Engineering Contracting Co. | Status: Executed

Description | The SABB head office will be a 46,544-SM commercial office development comprised primarily of a 135-m tall office tower. A supporting podium is integrated and connected to the tower housing 7,013-SM of banking services, food and beverage areas and employee training facilities.

DALPCO Scope consists of the supply and installation of Metal Stairs, Bollards, Stainless & Glass Handrails Works.



Date: 03-Sep-2024

To whom it may concern

Subject: Declaration letter.

This is to declare that Alusteel and Madarioun has entered into a joint venture in KSA to execute prestigious projects in the Saudi market under the name of Dalpco which is own by both companies. Furthermore, it's imperative to highlight that all expertise and resources working under both of our companies is now serving the interest of Dalpco and making sure all knowledge and lessons learned in our long track is an added value for Dalpco to build on.

Regards,


ALUSTEEL
METALLIC & GLAZED FACADES GROUP

Aluseteel




**Madarioun International
Co.for Construction Ltd**

ALUSTEEL Major High Rise Projects | LIMASSOL DEL MAR - CYPRUS



Client: Public: Cpeir Properties, Zavos, Leptos Group | Main Contractor: AMIC

Architect: UDS Architects | Status: Executed 2021

SCOPE OF WORK | Engineering, supply and apply of aluminum curtain walling work, doors and windows, glass balustrades, balcony dividers, steel fire rated doors, aluminum fire rated doors, revolving doors, curved heavy steel structure canopies, customized shading elements, internal steel work.

SYSTEM USED: Muskita aluminum system

- | | |
|---|--|
| • Stick Curtain Walls - approx. 2,000 sqm | • Doors / Windows - approx. 8,000 sqm |
| • Balustrades- approx. 7,600 sqm. | • Metal Railings - approx. 2,000 lm |
| • Steel works approx. 90 tons | • Fire Rated Doors / Windows - 133 pcs |

ALUSTEEL

ALUSTEEL Major High Rise Projects | LIMASSOL DEL MAR - CYPRUS



ALUSTEEL

ALUSTEEL Major High Rise Projects | AYIA NAPA MARINA TOWER- CYPRUS



Client: Caramondani Group & Naguib Sawiris | Main Contractor: TERNA

Architect: Smith Group JJR & J&A / Philippou Architect | Status: Executed 2022

SCOPE OF WORK | Supply and apply of aluminum curtain walling work, minimal doors and window openings, glass balustrade and dividers, customized shading element, cladding and

- Stick Curtain Walls - approx. 4,000 sqm
- Balustrades- approx. 4,000 sqm.
- Decorative elements - 70 tons Aluminum Extruded Shutters
- Doors / Windows - approx. 1,100 sqm
- Frameless Façade - approx. 1,700 sqm

SYSTEM USED: Alumil aluminum system



ALUSTEEL

ALUSTEEL Major High Rise Projects | AYIA NAPA MARINA TOWER- CYPRUS



ALUSTEEL

ALUSTEEL Major High Rise Projects | THE ICON - CYPRUS



CLIENT: Imperio Group
MAIN CONTRACTOR: Iacovou Group
ARCHITECT: UDS architects

Status: Executed 2022

SCOPE OF WORK: Engineering, supply and apply of ACP and honeycomb cladding material of the building shaped façade.

• Metal Cladding - approx. 17,000 sqm.

SYSTEM USED: Etalbond aluminum composite panels & Winsom honeycomb material

ALUSTEEL

ALUSTEEL Major High Rise Projects | THE ICON - CYPRUS



ALUSTEEL

ALUSTEEL Major High Rise Projects | THE LANDMARK NICOSIA- CYPRUS



CLIENT: The Cyprus Tourism Development Co Ltd
MAIN CONTRACTOR: K. Athienitis Contractors Ltd
ARCHITECT: Eraclis Papachristou Architects | Status: Executed 2023

SCOPE OF WORK: Supply, fabrication and installation of aluminum and glazing works of external doors & windows, curtain wall unitized and stick system, glazed balustrades, aluminum louvers, ACP cladding, terrazzo cladding, steel canopies

- Unitized CW - approx. 7,300 sqm | • Stick CW - approx. 2,800 sqm
- Doors / Windows - approx. 2,200 sqm | • Metal Cladding - approx. 9,200 sqm
- Balustrades- approx. 1,500 sqm. | • Frameless Façade - approx. 230 sqm
- Louvers- approx. 3,200 sqm. | • Stone Works - approx. 5,800 qm | • Steel Works - approx. 300 tons
- Decorative elements - 8,500 lm of Aluminum Extruded Fins 450mm

SYSTEM USED: Double glazed curtain wall unitized system by Schuco, doors and windows by Muskita, aluminum composite panel from Etalbond, glass dividers system by Muskita, terrazzo cladding panels from aglotech



ALUSTEEL

ALUSTEEL Major High Rise Projects | EKO PEARL TOWERS - Nigeria



MAIN CONTRACTOR: ITB | ARCHITECT: TAA

Status: Executed 2017

SCOPE OF WORK | Supply and apply of aluminum doors & windows, aluminum curtain wall, aluminum louvers, aluminum composite panels, glazed balustrade, aluminum pergulas

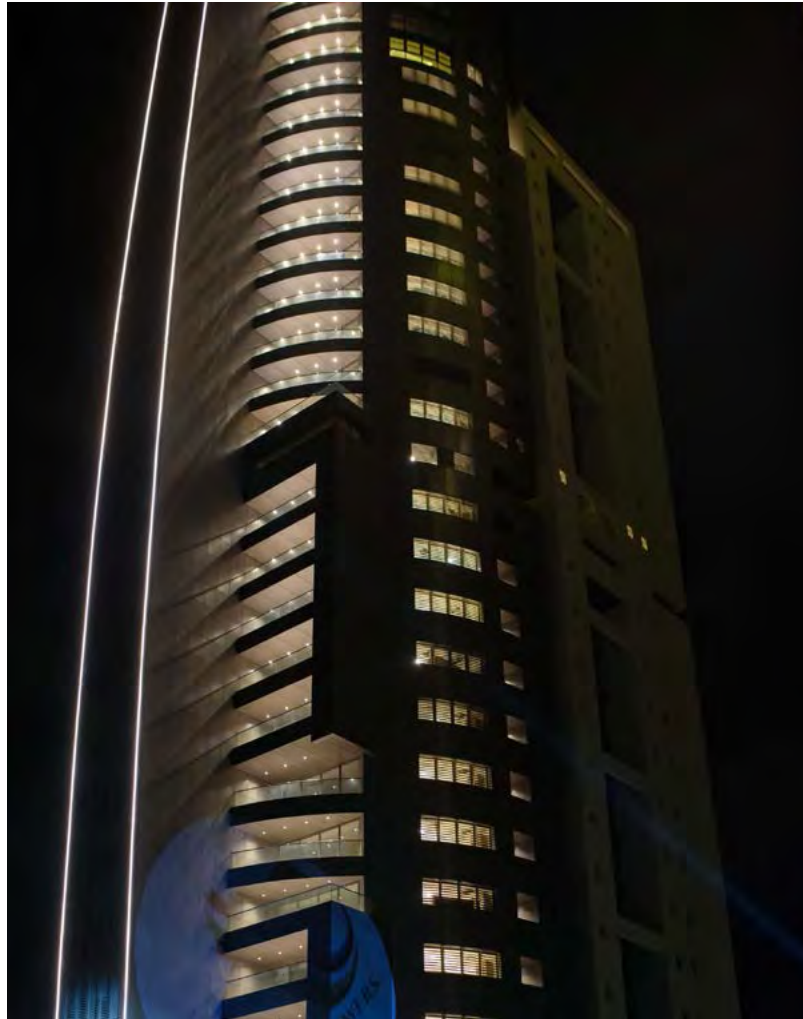
- Stick Curtain Walls - approx. 2,200 sqm
- Metal Cladding - approx. 22,000 sqm
- Louvers- approx. 4,200 sqm
- Doors / Windows - approx. 8,000 sqm
- Balustrades- approx. 500 sqm.

SYSTEM USED: Sapa building system



ALUSTEEL

ALUSTEEL Major High Rise Projects | EKO PEARL TOWERS - Nigeria



ALUSTEEL

ALUSTEEL Major High Rise Projects | AZURI - Nigeria



MAIN CONTRACTOR: ITB
ARCHITECT: SAOTA, Stefan Antoni,
Olmesdahl Truen Architects
CONSULTANT: Gensler

Status: Executed 2021

SCOPE OF WORK: Aluminum doors & windows, glazed balustrade, aluminum curtain wall, terracota cladding, textura shading blades system, stainless steel canopies

- Unitized CW - approx. 11,000 sqm
- Stick CW - approx. 4,700 sqm
- Doors / Windows - approx. 9,500 sqm

SYSTEM USED: Sapa building system performance 70, Plausance 50, Elegance 52, Hunter Douglas

ALUSTEEL

ALUSTEEL Major High Rise Projects | AZURI - Nigeria



ALUSTEEL

ALUSTEEL Major High Rise Projects | Kings Tower - Nigeria



MAIN CONTRACTOR: ITB
ARCHITECT: SAOTA, Stefan Antoni,
Olmesdahl Truen Architects
CONSULTANT: CCP, Consultants Collaborative Partnership

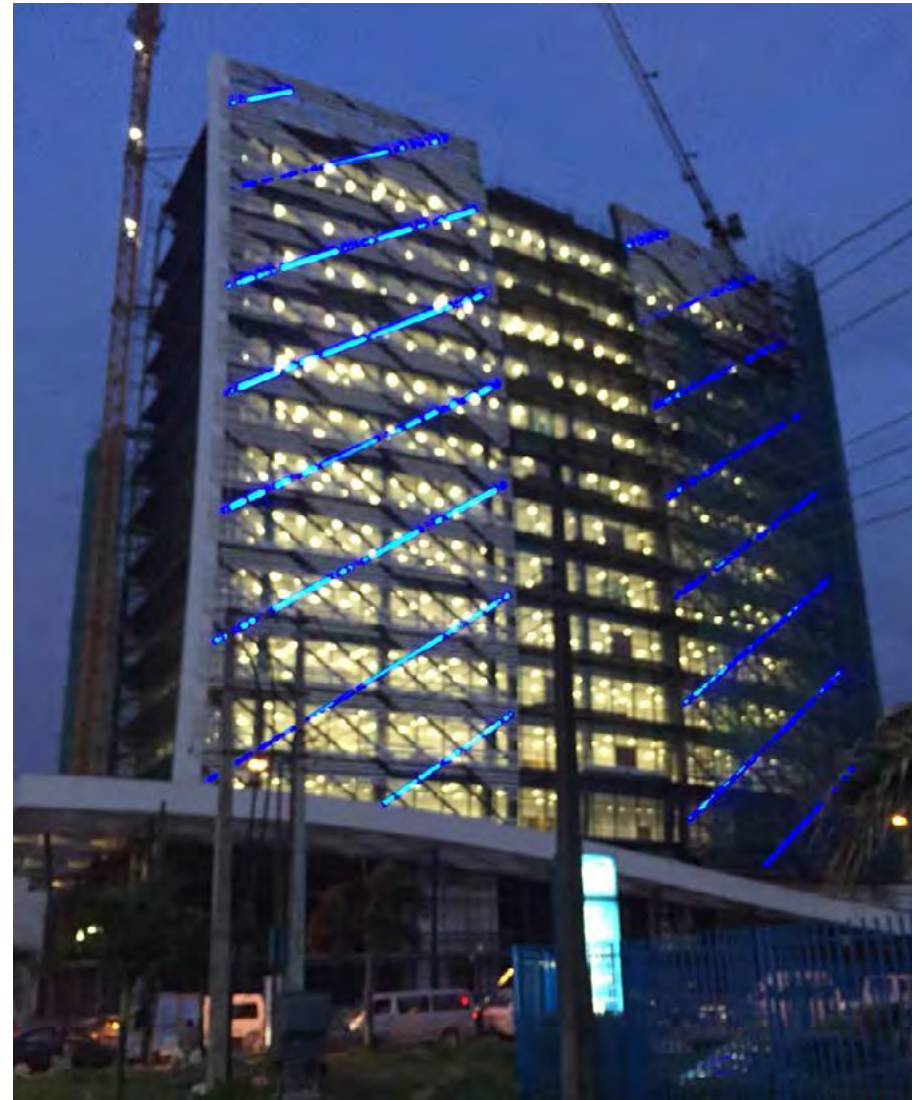
SCOPE OF WORK: Double skin façade installation

SYSTEM USED: Heavy structure customized aluminum & stainless steel,
hot deep galvanized steel

Status: Executed 2018

ALUSTEEL

ALUSTEEL Major High Rise Projects | Kings Tower - Nigeria



ALUSTEEL

ALUSTEEL Major High Rise Projects | KORAMO Residential Building - Nigeria

ON GOING



MAIN CONTRACTOR: ITB
CONSULTANT: Apave
CLIENT: DG Jones

SCOPE OF WORK: Façade cladding

Executed 2018

ALUSTEEL

ALUSTEEL Major High Rise Projects | Saifi Plaza - LEBANON

MAIN CONTRACTOR: Ramco Group
ARCHITECT: Nabil Ghoulam
CONSULTANT: IBEC
CLIENT: Ayman Sanyoura Management

Executed 2018



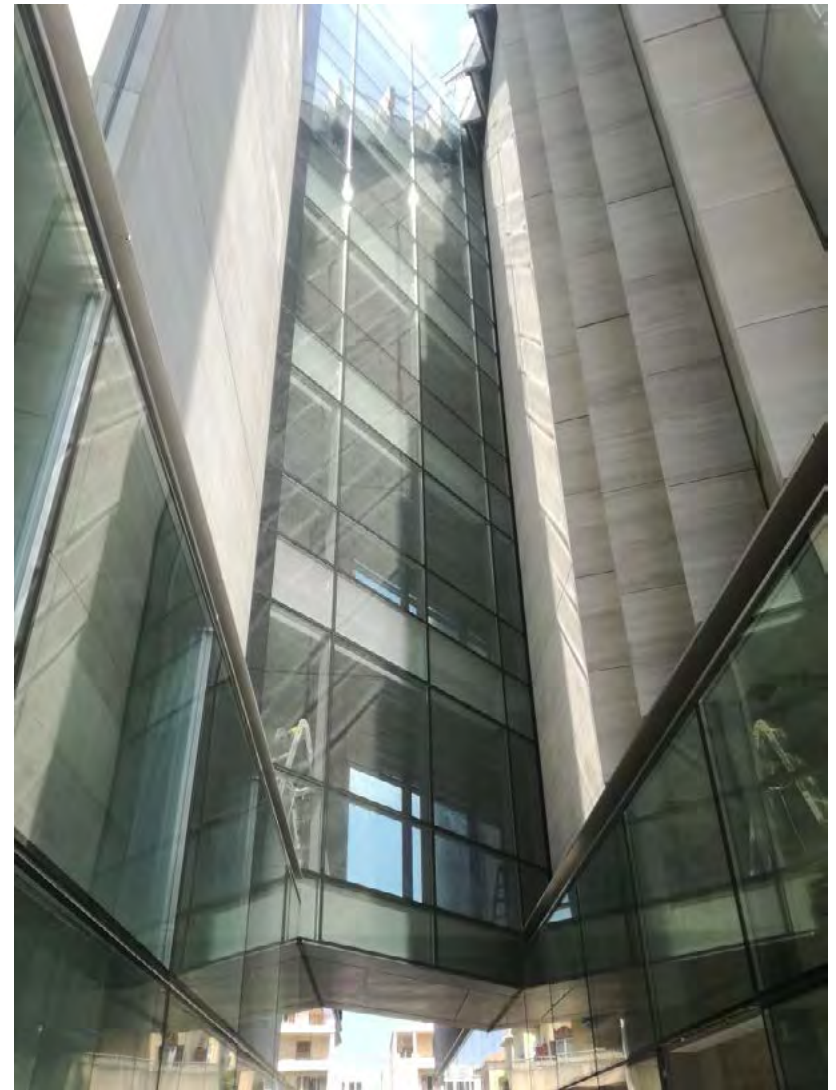
SCOPE OF WORK: Aluminum unitized curtain wall, stainless steel decorative elements

- Unitized CW - approx. 4,000 sqm | • Stick CW - approx. 2,000 sqm
- Decorative elements - 400 Lm Stainless Steel Decorative Cladding

SYSTEM USED: Sapa building system, mnon standard customized system

ALUSTEEL

ALUSTEEL Major High Rise Projects | Saifi Plaza - LEBANON



ALUSTEEL

ALUSTEEL Major High Rise Projects | Zena Tower, El Naher - LEBANON



MAIN CONTRACTOR: MAN Enterprises
ARCHITECT: Samir Khairallah & Partners
CLIENT: Kopibat

Executed 2018

SCOPE OF WORK: Aluminum doors and windows, curtain wall, aluminum shading louvers, glazed balustrade, aluminum composite panels, glazed partitions, glass cladding

- Stick Curtain Walls - approx. 6,200 sqm
- Doors / Windows - approx. 2,800 sqm
- Metal Cladding - approx. 3,400 sqm
- Louvers- approx. 3,000 sqm
- Balustrades- approx. 200 sqm.
- Framless Façade - approx. 1,000 sqm

SYSTEM USED: HUECK building system



ALUSTEEL

ALUSTEEL Major High Rise Projects | Saifi 450 - LEBANON



MAIN CONTRACTOR: K-Build Engineering & Contracting

ARCHITECT: Bernard Khoury

CONSULTANT: Elie Karam

CLIENT: Capstone

Executed 2018

SCOPE OF WORK: Aluminum doors & windows, aluminum curtain wall, glazed balustrade, heavy steel structures, aluminum decorative fins, aluminum composite panels

- Doors / Windows - approx. 6,700 sqm | • Metal Cladding - approx. 13,000 sqm
- Steel Works - approx. 150 tons
- Decorative Elements - approx. 26,000 Lm Aluminum Extruded fins 450x100mm

SYSTEM USED: Sapa building system

ALUSTEEL

ALUSTEEL Major High Rise Projects | Elite de Sursock - LEBANON



MAIN CONTRACTOR: Kfoury Engineering & Contracting

ARCHITECT: Batimat

CONSULTANT: Batimat

CLIENT: Capstone

Executed 2018

SCOPE OF WORK: Aluminum doors & windows, aluminum curtain wall, aluminum composite panels, glazed balustrade, aluminum shading louvers

- Stick Curtain Walls - approx. 1,000 sqm | • Doors / Windows - approx. 3,000 sqm
- Metal Cladding - approx. 7,700 sqm | • Louvers- approx. 1,000 sqm
- Balustrades- approx. 250 sqm.

SYSTEM USED: Sapa building system

ALUSTEEL

ALUSTEEL Major High Rise Projects | LIV Plot 1106 - LEBANON



MAIN CONTRACTOR: Tabet Enterprise
ARCHITECT: Bernard Khoury
CONSULTANT: Marc Hatem

Executed 2019

SCOPE OF WORK: Aluminum doors & windows,
aluminum curtain wall, aluminum composite panels

- Stick Curtain Walls - approx. 1,700 sqm
- Doors / Windows - approx. 1,100 sqm
- Metal Cladding - approx. 550 sqm

SYSTEM USED: Schuco building system

ALUSTEEL

ALUSTEEL Major High Rise Projects | Trillium Towers- LEBANON



MAIN CONTRACTOR: Mercury Development

ARCHITECT: Mercury Development

CONSULTANT: ACE

CLIENT: Mercury Development

Executed 2016

SCOPE OF WORK: Aluminum doors & windows, curtain wall facades, aluminum composite panel, glazed balustrades, shading louvers, stainless steel, decorative elements

- Stick Curtain Walls - approx. 2,500 sqm | • Doors / Windows - approx. 7,100 sqm
- Metal Cladding - approx. 12,000 sqm | • Louvers- approx. 600 sqm
- Framless Façade approx. 400 sqm.

SYSTEM USED: Sapa building system

ALUSTEEL

ALUSTEEL Major High Rise Projects | Eau One - LEBANON



MAIN CONTRACTOR: ACC (Lebanon) SAL
ARCHITECT: AAA

Executed 2013

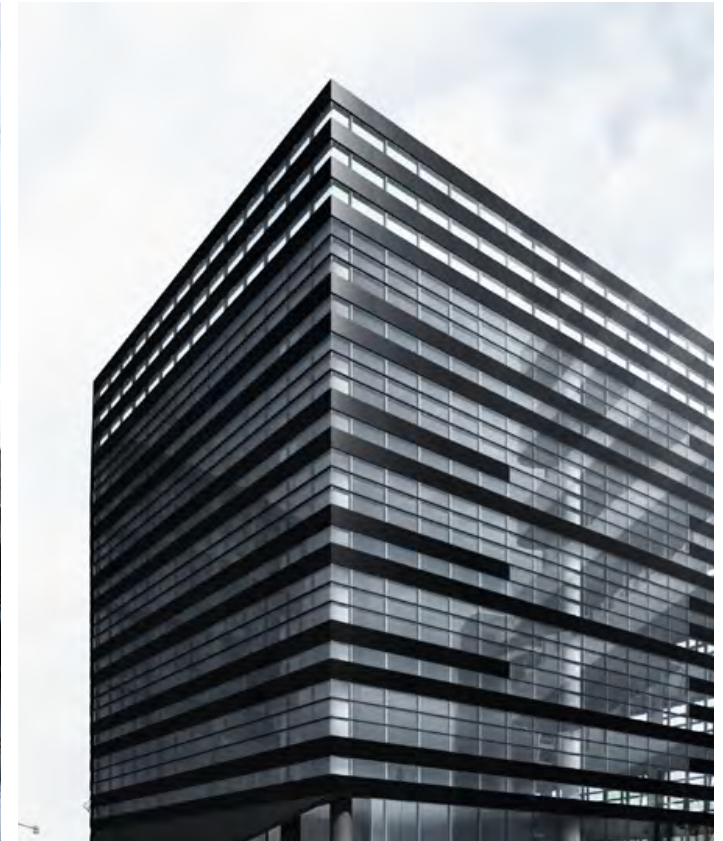
SCOPE OF WORK: Aluminum doors & windows, aluminum curtain wall, aluminum composite panels, stackable shutters

- Stick Curtain Walls - approx. 200 sqm | • Doors / Windows - approx. 3,000 sqm
- Metal Cladding - approx. 810 sqm | • Louvers- approx. 600 sqm
- Frameless Façade- approx. 400 sqm.
- Decorative Elements - approx. 910 sqm Curtain Glass

ALUSTEEL

SYSTEM USED: Sapa building system, Hunter Douglas

ALUSTEEL Major High Rise Projects | MINA HOSN 1394 - LEBANON



MAIN CONTRACTOR: ACC, Arabian Construction Company

ARCHITECT: A Practice Studio, Diar

CONSULTANT: ARUP

CLIENT: Ayman Sanyoura Management

Executed 2012

SCOPE OF WORK: Aluminum unitized curtain wall, steel entrances façades

- Unitised Curtain Walls - approx. 3,000 sqm
- Frameless Façade - approx. 1,200 sqm
- Louvers- approx. 900 sqm
- Decorative Elements - approx. 900 sqm Stackable Shutters

SYSTEM USED: Sapa building system, non standard customized system

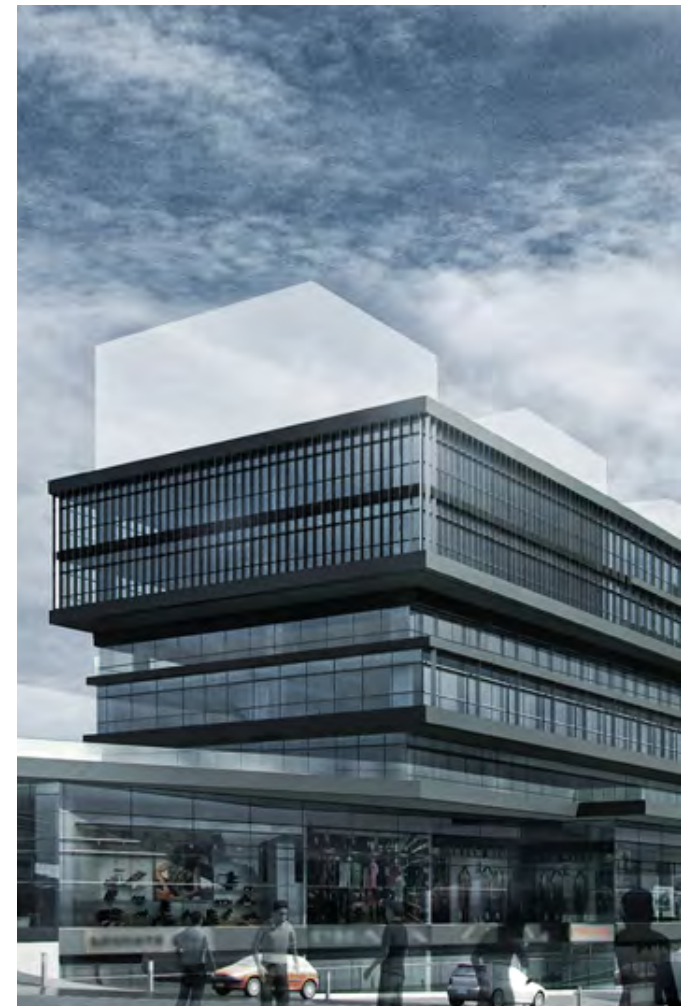
ALUSTEEL

ALUSTEEL Major Projects | Wardieh Garden - LEBANON



ALUSTEEL

ALUSTEEL Major Projects | Kaslik Avenue - LEBANON



ALUSTEEL

ALUSTEEL Major Projects | Midori - LEBANON



ALUSTEEL

ALUSTEEL Major Projects | Mall of Dilmunia - Bahrain



ALUSTEEL

ALUSTEEL Major Projects | VI Continental Reinsurance - Nigeria



ALUSTEEL

ALUSTEEL Major Projects | WATERFRONT CITY - LEBANON



ALUSTEEL

Projects | KAFD-Façade Completion Work Parcel No.1.08 | KSA



Location: Riyadh, KSA

Client: Public Investment Fund (PIF) of Kingdom of Saudi Arabia

Project Management: KAFD DMC

Consultant: Parsons

Status: Executed, 2024 | **Value:** 71.0 M SAR



Projects | KAFD-Façade Completion Work Parcel No.4.12 | KSA



Location: Riyadh, KSA

Client: Public Investment Fund (PIF) of Kingdom of Saudi Arabia

Project Management: KAFD DMC

Consultant: Parsons

Status: Executed, 2024 | **Value:** 44.0 M SAR



Projects | IRIS – FAIRMONT RAMLA - KSA

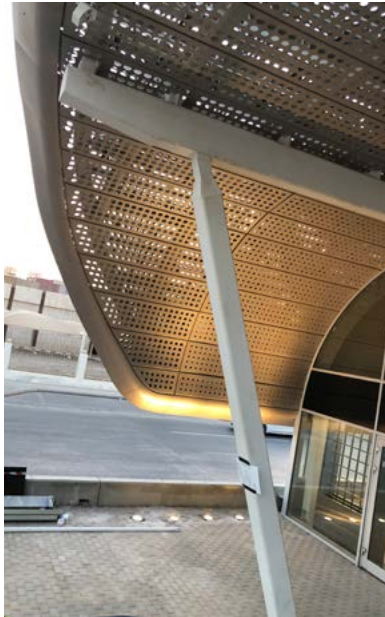


Client: Ramla Real Estate Development | **Contractor:** First Saudi Contracting Co.Consortium

Architect: Badih & Kontar Architects | **Status:** Executed | **Value:** 7 M SAR



Projects | Bus Rapid Transit (BRT) | KSA



Client: The Royal Commission of Riyadh City

Consultant: AL DAR | **Contractor:** Saudi Constructioneers

Status: Executed, 2021 **Contract Value:** SR 85 Million



Projects | BRIDGES – Bus Rapid Transit (BRT) | KSA



Client: The Royal Commission of Riyadh City

Consultant: AL DAR

Contractor: Saudi Constructioneers

Status: Executed, 2021 | **Contract Value:** SR 76 Million



Projects | METRO RIYADH | KSA



Client: The Royal Commission of Riyadh City

Consultant: RAMPED
Contractor: FREYSSINET

Status: Executed, 2021

Contract Value: SR 46 Million



Projects | Saudi British Bank, SABB New Head Office Tower- KSA



SABB  ساب

Client: SABB Bank | **Architect :** CallisonRTKL

Contractor: El-Seif Engineering Contracting Co. | **Status:** Executed

Contract Value: SR 3 M

Description | The SABB head office will be a 46,544-SM commercial office development comprised primarily of a 135-m tall office tower. A supporting podium is integrated and connected to the tower housing 7,013-SM of banking services, food and beverage areas and employee training facilities.

DALPCO Scope consists of the supply and installation of Metal Stairs, Bollards, Stainless & Glass Handrails Works.



ALUSTEEL Major Projects | Zena Tower, El Naher - LEBANON

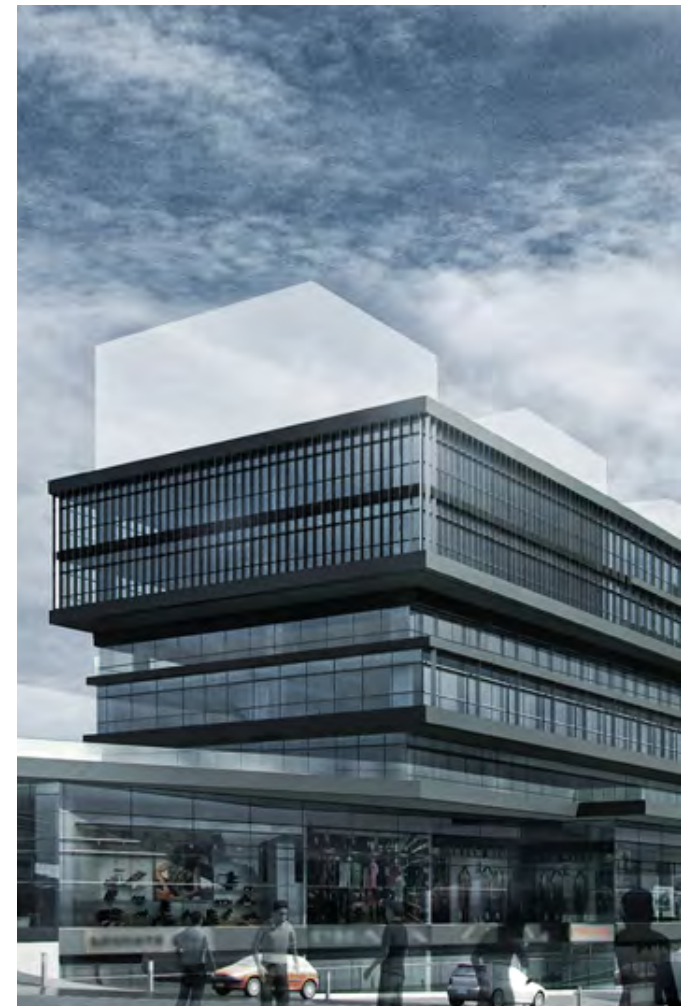


ALUSTEEL Major Projects | Wardieh Garden - LEBANON



ALUSTEEL

ALUSTEEL Major Projects | Kaslik Avenue - LEBANON



ALUSTEEL

ALUSTEEL Major Projects | Elite de Sursock - LEBANON

ON GOING



ALUSTEEL

ALUSTEEL Major Projects | Midori - LEBANON



ALUSTEEL

ALUSTEEL Major Projects | Saifi 450 - LEBANON



ALUSTEEL

ALUSTEEL Major Projects | LIV Plot 1106 - LEBANON



ALUSTEEL

ALUSTEEL Major Projects | AZURI - Nigeria



ALUSTEEL

ALUSTEEL Major Projects | Kings Tower - Nigeria



ALUSTEEL

ALUSTEEL Major Projects | Mall of Dilmunia - Bahrain



ALUSTEEL

ALUSTEEL Major Projects | KORAMO Residential Building - Nigeria

ON GOING



ALUSTEEL

ALUSTEEL Major Projects | VI Continental Reinsurance - Nigeria



ALUSTEEL

ALUSTEEL Major Projects | Saifi Plaza - LEBANON



ALUSTEEL

ALUSTEEL Major Projects | WATERFRONT CITY - LEBANON



ALUSTEEL

ALUSTEEL Major Projects | WATERFRONT CITY - LEBANON



ALUSTEEL

ALUSTEEL Major Projects | Trillium Towers- LEBANON



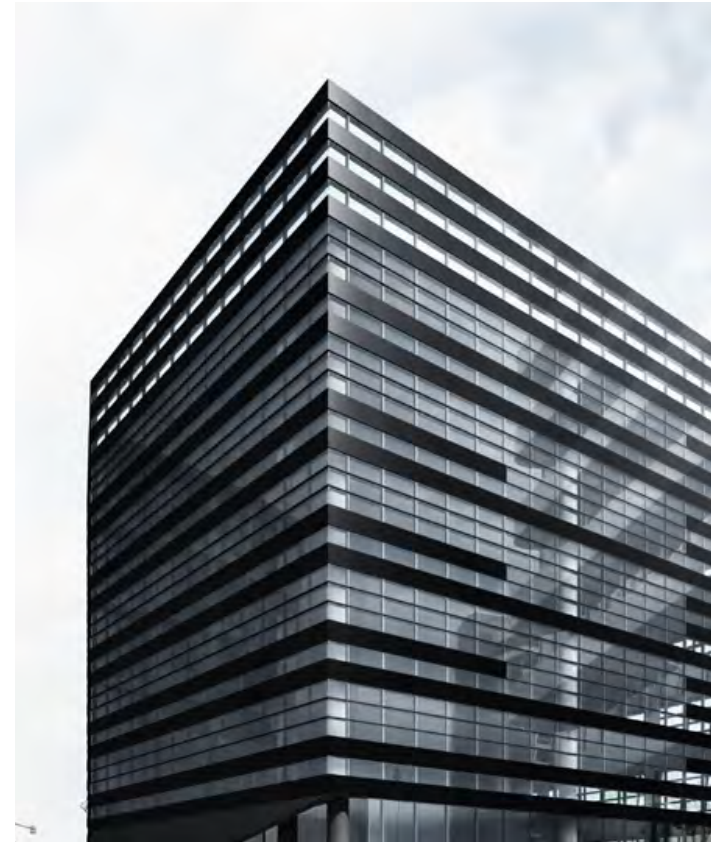
ALUSTEEL

ALUSTEEL Major Projects | Eau One - LEBANON



ALUSTEEL

ALUSTEEL Major Projects | MINA HOSN 1394 - LEBANON



ALUSTEEL

Other Projects



Other Projects | Alusteel



Project Name: DBAYEH 941
Location: Dbayeh, Lebanon
Client: We Do It SARL
Consultant: We Do It SARL
Contractor: We Do It SARL
Executed: 2016

Executed: 2016



Project Name: Aya Tower
Location: Ashrafieh, Lebanon
Consultant: R & K
Contractor: Tabet Enterprise
Executed: 2018



Project Name: ORDER OF ENGINEER
Location: Tripoli, Lebanon
Contractor: Tabet Enterprise
Consultant: Bureau Ghalayini
Architect: Nadim G.Younes
Executed: 2011



Project Name: U Park 1289
Location: Ashrafieh, Lebanon
Consultant: Rafik El Khoury & Partners
Architect: Charles Hadife Architects
Contractor: Natcon Engineering & Contracting SAL



Project Name: ENTERTAINMENT CENTER
Location: Beirut, Lebanon
Client Rep.: DG Jones
Consultant: Khatib & Alami
Contractor: Geneco
Executed: 2011



Project Name: LA SIESTA HOTEL & BEACH RESORT
Location: Khaldeh, Lebanon
Client Rep.: Amine Al Souki
Contractor: Lead Construction
Executed: 2017

ALUSTEEL

Other Projects | Alusteel



Project Name: Ashrafieh 4748

Location: Ashrafiyeh, Lebanon

Consultant: Erga Group

Contractor: A.R. Hourie Enterprises

Executed: 2014



Project Name: PANORAMA Tower

Location: Dekwaneh, Lebanon

Consultant: Sarkis Azadian Architects

Contractor: Kfoury Engineering & Contracting

Executed: 2017



Project Name: AUB IOCE

Location: Beirut, Lebanon

Contractor: La Constructa

Consultant: Nabil Gholam

Executed: 2013



Project Name: Chidiac Residence

Location: Adma, Lebanon

Client: Messrs. Chidiac

Contractor: EDO

Executed: 2019



Project Name: RED ROCK

Location: Faqra, Lebanon

Consultant: Sarkis Azadian Architects

Contractor: Kfoury Engineering & Contracting

Executed: 2017



Project Name: LEKKI OFFICES

Location: Nigeria, Africa

Architect.: ESLA

Contractor: EKO Pearl Contracting

Executed: 2018

Other Projects | Madarioun



Project Name: HAVAL Showroom
Contractor:
Executed by: Madarioun International
Completed: 2019



Project Name: MITHAK Jeddah
Consultant: Awtad contracting
Contractor: HAK Architects and Contracting
Executed by: Madarioun International
Completed: Ongoing



Project Name: Steam Power Plant Administration Bld. AL Shuqaiq- Ghizan
Client: Sceco
Contractor: Eastern Trading And Construction
Executed by: Madarioun International
Completed: 2017



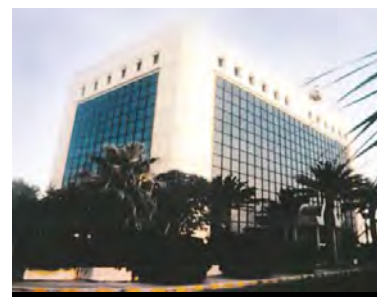
Project Name: NCB Bank, King Abdullah city
Contractor: OCC weavers
Executed by: Madarioun International
Completed: 2019



Project Name: Almaraie- Riyadh
Client: Al Maraie
Contractor: Occ waves
Executed by: Madarioun International
Completed: 2017



Project Name: PMDC Office Bldg - Jeddah
Client: PMDC
Consultant: Saudi Diyar
Contractor: Binladin
Executed by: Madarioun International
Completed: 2012



Project Name: Al Hamrani Office Building- Jeddah
Client: Mohammad Ali Al Hamrani
Consultant: Zuhair Fayez & Associates
Contractor: Al Hamrani Group
Executed by: Madarioun International
Completed: 2012



Project Name: Laylati- Jeddah
Client: Shk. Hani Al Attas
Consultant: Zuhair Fayez & Associates
Contractor: Rafik Kredieh Est
Executed by: Madarioun International
Completed: 2001

Other Projects | Madarioun



Project Name: Al Jabbari Office Building - Jeddah
Client: Abdulrahman Al Jabari
Consultant: Dr. Osama Al Shawa
Contractor: Al Jabbari .Est.
Executed by: Madarioun International-
Completed: 2007



Project Name: Al Nemr Center SHKRiyadh
Client: Abdulmehsen Al Nemr
Consultant: Khatib & Alami
Contractor: SALMOC
Executed by: Madarioun International
Completed: 2000



Project Name: Design Class- Jeddah
Client: Design Class
Consultant: Kamal Barhoum
Contractor: Rafik Kredieh
Executed by: Madarioun International
Completed: 1995



Project Name: Bridgestone Office Building - Jeddah
Client: Sheikh Khaled Bughshan
Consultant: audi Weimer & Trachte
Contractor: Bughshan Co.
Executed by: Madarioun International
Completed: 1995



Project Name: Al Dahlawi Plaza - Jeddah
Client: Ghassan Al Dahlawi
Contractor: Trans Middle East for Trading & Contracting
Executed by: Madarioun International
Completed: 2001



Project Name: CEDARI Building- Egypt
Client: Civil Aviation Authority
Consultant: AYALA Middle East Co.
Contractor: AYALA Middle East Co.
Executed by: Madarioun International
Completed: 2001



Project Name: Yokohama Bldg.- Jeddah
Client: Yokohama Group
Consultant: Jamjoom Consults
Contractor: Saudi Construction Co.
Executed by: Madarioun International
Completed: 2000



Project Name: Doha City Center- Jeddah
Consultant: Meinhardt
Contractor: GETTCO Contracting
Executed by: Madarioun International
Completed: 2000

Other Projects | Madarioun



Project Name: Farsi Plaza - Jeddah
Client: Zaki Farsi
Consultant: Zaki Farsi Office
Contractor: Al Redwan Holding Company
Executed by: Madarioun International
Completed: 2003



Project Name: Habitat - Jeddah
Client: Shk. Ismael Al Torki
Consultant: Retaj
Contractor: SAMACO
Executed by: Madarioun International
Completed: 2003



Project Name: SASO Laboratories- Riyadh
Client: SASO
Contractor: Issa Contracting
Consultant: Omranih & Associates
Executed by: Madarioun International
Completed: 1993



Project Name: Honda Commercial Center- Riyadh
Client: Honda
Consultant: Saudi Diyar
Contractor: Al Saad General Contracting
Executed by: Madarioun International
Completed: 2005



Project Name: Kingdom Hospital - Riyadh
Client: Prince Al Wadi Bin Talal
Consultant: Omrania & Associates
Contractor: EL Seif Engineering & Contracting Est.
Executed by: Madarioun International
Completed: 1998



Project Name: Intercontinental Hotel - Jeddah
Client: Prince Al Wadi Bin Talal
Consultant: Jamjoom Consults
Contractor: Shk. Yousef Jamjoom
Executed by: Madarioun International
Completed: 2009



Project Name: Jeddah Exhibition Center
Consultant: Yousef Ba'ashil
Contractor: Jeddah Chamber of Commerce & Industry.
Executed by: Madarioun International
Completed: 1999



Project Name: Jewellery Center – Jeddah
Client: Bin Hamran
Consultant: Harasani
Contractor: Al Saad General Contractor
Executed by: Madarioun International
Completed: 1996

Other Projects | Madarioun



Project Name: Laylati- Jeddah
Client: Shk. Hani Al Attas
Consultant: Zuhair Fayez & Associates
Contractor: Rafik Kredieh Est
Executed by: Madarioun International
Completed: 2001



Project Name: Middle East Bldg - Jeddah
Client: Shk. Khalid Al Amoudi
Consultant: Eng. Foad Smara
Contractor: Al Amoudi Bros
Executed by: Madarioun International
Completed: 1999



Project Name: Muhamadiyah Plaza - Jeddah
Client: Marwan Ba Qabas
Consultant: Eng. Marwan Ashour
Contractor: Marwan Ashour Management
Executed by: Madarioun International
Completed: 1999



Project Name: Nissan Showroom - Jeddah
Client: Mohamad Ali Al Hamrani
Contractor: Al Hamrani Group.
Executed by: Madarioun International
Completed: 1998



Project Name: Yanbu Cement Factory- Yanbu
Client: Yanbu Cement Factory
Consultant: Studio 65
Contractor: Humboldt Wedag G.A.
Executed by: Madarioun International
Completed: 1994



Project Name: MODA VIP Military Hospital - Riyadh
Client: Ministry of Defense
Contractor: Saudi Binladin Group
Executed by: Madarioun International
Completed: 1994

Contact Details



DALPCO

- **Trade Name** | Dar Aluminum Products Company LTD.
- **Commercial Register#** | 1010024366
- **Address** | 2nd Industrial City st.69, bldg.3477, unit no.11, Riyadh 14332-7025
Tel. +966 11498 0004
Fax. +966 11 498 0008
- **Website:** www.dalpco-sa.com

